



Aquila 50 Yacht Power Catamaran Specifications

Length overall	15.99 M / 52' 6"
Beam overall	7.76 M / 25' 6"
Height above waterline w/hard top	5.99 M / 19' 8"
Draft with sacrificial keel installed	1.26 M / 4' 2"
Light displacement	23,013 KG / 50,735 LB
Fully loaded displacement	32,281 KG / 71,167 LB
Sleeps (up to)	10+
Max. passengers	30
Cabins	3/4
Heads with separate showers	3/4
Utility cabin	1 (option to convert to bunk beds)

Tankage

Fuel tank (total)	1,964 L / 518 GAL
Optional additional fuel tanks (total)	880 L / 232 GAL
Water tank (total)	800 L / 212 GAL
Holding tank (total)	250 L / 66 GAL

CE certification

A (ocean):12 PAX; B (offshore):12 PAX
C (coastal):20 PAX; D (inland):30 PAX

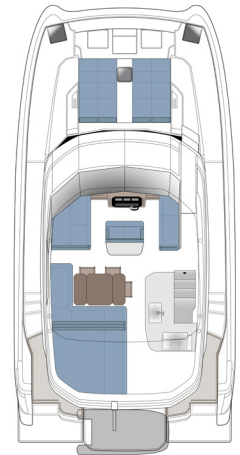
Propulsion

Standard	2x D6 380 HP VOLVO PENTA INBOARD-DIRECT DRIVE
Optional	2x D6 480 HP VOLVO PENTA INBOARD-DIRECT DRIVE
Optional	2x YANMAR 550 HP

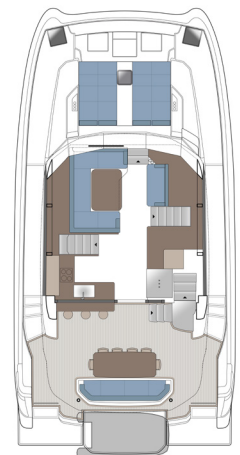
Construction

- Resin infused vinylester throughout the hull and deck
- Resin infused vinylester throughout the bulkhead and reinforcing (no plywood in structural components or below waterline)
- Core materials (PVC) vary in density dependent on loads
- Water tight bulkheads fore and aft (NPG)
- Bulbous bows separately molded and attached to each bow; breakaway safety
- Windows in hull and deck – tempered glass meeting ISO standards

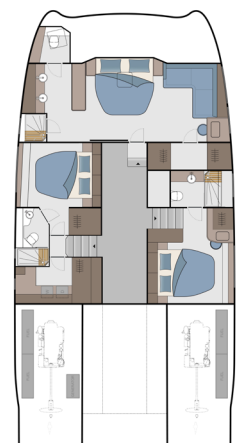
All specifications and options are subject to change by Sino Eagle Yachts at their sole discretion. Performance is purely indicative and not a contractual commitment. Performance is subject to many variances outside the control of Sino Eagle Yachts. Specifications and graphics in this brochure are non-binding and customer must enter into contractual agreement with the Dealer or Agent of Record.



STANDARD FLYBRIDGE



STANDARD MAIN DECK



STANDARD 3-CABIN,

Features

- An exceptional performing and seaworthy hull shape providing first in class stability and comfort
- Expansive outdoor living and entertaining spaces along with luxurious interior styling and amenities
- Plenty of sun coverage via fiberglass hardtop with 316L polished stainless steel supports on flybridge
- Direct bow access from starboard steps leading from flybridge down to bow area
- FUSION audio system with Bluetooth and eight (8) Fusion speakers and 4 Zone Sound Control
- C-Zone digital switching system for DC powered components
- Optional interior helm station for added comfort during inclement weather
- For overnighting, premium comforts are provided by one (1) full beam master cabin with ensuite head and two (2) guest cabins with ensuite heads
- Option forepeak cabin (starboard bow) available with all cabin configurations

Propulsion

Standard Engine: 2x D6 380HP Volvo Penta Inboard - Direct Drive

Interior Layout

- Full beam single level master suite including full size his/her walk in closet, large settee area and vanity, separated head and shower area with two (2) sinks
- Full beam owners cabin with King size memory foam bed, ensuite head, electric flush freshwater toilet, walk in closet and sofa (standard) or work desk (optional)
- Two (2) guest cabins with Queen size beds, ensuite heads with electric flush freshwater toilet
- Utility cabin with storage and space for optional washer/dryer – option available to convert to double bunk
- Large salon area with comfortable U-Shaped seating and sofa area to starboard side
- Large galley area with common household amenities and large tilt up window for bar area

Hull and Deck Features

- Eight (8) opening deck hatches carefully positioned to enhance ventilation in cabins
- Thirteen (13) opening portlights installed in hull side windows and forward salon windows
- Deck railings in 316L stainless steel
- Ergonomic transom steps for easy boarding and comfortable lounging off stern
- PVC rub rail with 316L stainless steel insert offering all round protection
- Comfortable and protected bow seats integrated into deck railing (2)
- Foredeck seating with comfortable cushions
- Foredeck sun pad area with integrated cushions
- Flush mounted size 60 hatches allowing access to port and starboard bow lockers (2)
- Deck hatches allowing access to anchor chain area and windlass
- Deck fill plates in 316L stainless steel: water (2); fuel (2); waste (3)
- Stainless steel mooring cleats thru bolted (10 total)
- Well placed ergonomic handrails in 316L stainless steel ensuring secure movement onboard

- Forward access steps from flybridge to bow with 316L polished stainless steel support and safety rail
- LED navigation lights, running lights, and anchoring light
- Engine ventilation intakes with FRP cowling cover
- Custom stainless steel retractable swim ladder with teak steps located in large aft deck hatch
- Aft cockpit, flybridge, and side decks all self draining
- Equipped with a deck hatch for main engine maintenance and an additional small hatch for easy daily maintenance
- Aft cockpit with heavy duty stainless steel sliding door with flip up bar counter window
- Fixed aft cockpit table with stainless steel supports comfortably seating for eight (8)
- Aft cockpit settee seating with storage underneath
- LED deck courtesy lights located at transom, cockpit, and flybridge
- Windows, bonded in tempered glass – hull side and super structure
- Salon and master cabin forward facing windows, bonded in tempered glass

Aft Deck and Cockpit

- Sliding stainless steel glass door, lockable with threshold – entrance to salon
- Bar area with three (3) 316L stainless steel bar stools and large hinged window to open up to galley area
- Engine room access from deck hatches
- LED flood lights to light up aft transom and dinghy lift area (2)
- Marine waterproof 6.5" Fusion speakers (2)
- Structural polished stainless steel supports (2)
- Handrails, 316L stainless steel
- LED courtesy lighting
- LED overhead lighting
- Seating across width of cockpit area
- Stainless rotating safety doors to port and starboard side (stainless steel and acrylic)
- Self draining cockpit area
- Slide out stainless steel swim ladder with teak steps
- LED courtesy lights on transom steps
- Large FRP storage lockers located on port and starboard side
- Expansive fixed aft FRP platform extending from port to starboard

Flybridge

- Expansive FRP hardtop with stainless support structure
- Forward flybridge access via forward starboard bow steps with built in stainless steel handrail for safety
- Spacious comfortable convertible helm seat for two (2) people with upholstered seat
- Comfortable forward facing seat on port and starboard side adjacent to helm station
- Manual opening overhead hatches in hardtop allowing airflow to captain (2)
- Volvo Penta 7" engine Data Color Display at flybridge helm
- Volvo Penta dual engine throttle control
- Electric fly by wire steering system
- Marine waterproof 6.5" Fusion speakers (4)
- Main access from aft cockpit molded FRP steps
- Handrails conveniently located all around flybridge for secure movement
- Stainless steel framed Perspex windshield
- Compass at helm station
- Variable position stainless steel Aquila branded steering wheel
- L-Shaped settee area with fixed table and fold down extensions— comfortably seating eight (8) people

All specifications and options are subject to change by Sino Eagle Yachts at their sole discretion. Performance is purely indicative and not a contractual commitment. Performance is subject to many variances outside the control of Sino Eagle Yachts. Specifications and graphics in this brochure are non-binding and customer must enter into contractual agreement with the Dealer or Agent of Record.



estupendanautica.com
info@estupendanautica.com

Upholstered aft flybridge sun lounge cushions and backrests
 Wet bar located aft starboard deck area incorporating Corian work surface, sink with hot and cold faucet (optional location for full size electric BBQ)
 Large storage area under wet bar with two (2) access doors (optional location for fridge and ice maker)
 FRP storage area behind the helm station
 Life jacket and safety gear storage area under L-Shaped settee seating area
 Designated life raft storage under sun lounge cushion
 Cup holders located in various areas around flybridge
 LED overhead mood lighting in hardtop ceiling

Engine Room

Automatic fire suppression heat activated system with alarm monitors at helm station
 Diesel fuel system with water separation filters
 Dedicated aluminum fuel tanks for each engine with safety shut off valves and level monitors
 Engine room insulation – flame retardant polyurethane foam covered metalized polyester film
 LED lighting (2)
 Fly by wire steering
 Automatic bilge pump in each engine room with warning light at helm and nav station
 Excellent all round engine and systems access for ease of maintenance
 982L/259 gal fuel tanks in each engine room—total of 1,964L/518 gal

Underwater Gear

Engine A-Drive transmission for compact efficiency
 Propeller tunnels for reduced draft and maximum efficiency
 Bronze propellers
 Machined stainless steel propeller shafts with rope cutter installed on each shaft
 Rudders and tiller arm in 316L stainless steel with FRP tube
 Shut off valves on all salt water intakes in engine rooms
 Sea water strainers with transparent lid
 Watertight self aligning dripless shaft seal with 316L stainless steel housing
 Extended bronze P-Bracket for maximum propeller protection
 Sacrificial skeg forward of drive for added running gear protection

Mooring System

Electric anchor windlass (24v-1700w) with wired control
 Stainless steel anchor roller
 Primary anchor – 70 lbs galvanized
 Galvanized anchor chain (3/8" with 150 ft length) and bridle system
 Fiberglass deck hatch to self draining locker
 Antifouling paint (black) applied to underside of hull surface up to waterline (does not include running gear)
 Mooring kit: includes six (6) fenders, six (6) mooring lines

Salon

Laminate finished cabinetry with solid wood capping throughout with accented wall and ceiling coverings
 Shatter-proof windows with external overhangs offers excellent visibility and reduce sunlight
 Flush mount 7.7" 200w overhead speakers in ceiling panels (2)
 Tempered glass, stainless steel sliding door providing access to cockpit

Blinds covering port and starboard side windows
 Upholstered panel ceilings with decorative wood trim and LED accent lighting
 Comfortable built in open couch seating to starboard for two (2) persons
 Settee seating U-Shape around salon table comfortably seats eight (8) people
 Expandable salon table mounted on fixed stainless steel pedestal
 Cushions covered with soft easy to clean upholstery
 Port light hatches installed on forward facing windows providing additional ventilation (3)
 Designated area for TV and soundbar to be installed on salon bulkhead
 Overhead LED ceiling lights, LED mood lighting, and LED courtesy lighting
 LED courtesy floor lighting
 Decorative LED wall sconces (2)
 Electrical outlets located throughout area
 Floor access hatch to main house batteries and charging/inverter systems
 Synthetic wear resistant flooring offering maintenance free natural wood look
 Stair access to starboard and port side cabins
 Central walkway access to forward master cabin
 316L stainless steel handrail in salon and galley wrapped in leather

Galley

Induction electrical cooktop (4 burner)
 Refrigerator/freezer—full sized French door refrigerator with slide out freezer below
 All countertops with Corian natural stone finish
 Dedicated microwave storage location with outlet
 Large single stainless steel sink with Corian cover and faucet
 Shatter-proof windows with external overhangs offers excellent visibility and reduce sunlight
 Flush mount 7.7" 200w overhead speakers in ceiling panels (2)
 Built in slide out garbage bin under sink
 Hinged stainless steel bar window with flip down Corian countertop
 Storage cupboards and drawers offering ample storage for all galley accessories
 Overhead LED ceiling lights as well as mood lighting
 Electrical outlets located throughout area
 Synthetic wear resistant flooring offering maintenance free natural wood look

Owners Cabins—Full Beam

Laminate finished cabinetry with solid wood capping throughout with accented wall and ceiling coverings
 Private access door to cabin for privacy
 A/C vents with aircon display/controller
 Power sockets with single USB outlet located next to bed (2)
 Opening ventilation hatches in ceiling with concealed blinds (2)
 Bedside cabinets with pull out drawers
 LED reading lights to port and starboard of bed above bedside cabinets
 Designated area for flat screen TV and sound bar
 Port and starboard deck and hull side windows with blinds
 Expansive side facing windows offering 180 degree view to inside
 Additional storage under cabin mattress
 Memory foam mattresses
 Cabin Mattress Size: King: L =80" (204cm) x W=77" (195cm)

Dressing and desk area to starboard side including:

(only available for 3 and 4 cabins version)

- Built in vanity with hinged top with mirror and light inside
- Storage cabinets under countertop
- Hull side window with blinds
- Power outlets
- Leisure settee on starboard side
- Walk in closet with storage shelves and clothes hanging area
- Storage cabinets on inboard side area
- Full length mirror with upholstered frame

Bathroom area to port side including:

- Hull side window with blinds
- Bathroom vanity with two (2) sinks and faucets
- GFCI protected outlets at sinks (2)
- Toothbrush and towel holders
- Corian countertops
- Overhead cabinetry for storage
- Storage cabinets under countertop
- Walk in fresh water electric flushing toilet with privacy door
- Storage cabinet on the port side of the head
- Opening ventilation hatches in head ceiling with concealed blinds

VIP Cabins—Port and Starboard Side

Laminate finished cabinetry with solid wood capping throughout with accented wall and ceiling coverings

Private access door to cabin for privacy

A/C vents with aircon display/controller in each cabin

Power sockets with single USB outlet located next to bed (2)

Bedside cabinets

Clothes hanger closet

Large hull side window with blinds

Full length mirror with upholstered frame

Overhead LED ceiling lights as well as mood lighting

LED reading lights to port and starboard of bed above bedside cabinets

Additional storage under cabin mattress

Memory foam mattresses

Cabin Mattress Size: Queen: L =79" (200cm) x W=60" (152cm)

Bathroom area including:

- Fresh water electric flushing toilet
- Walk in shower with separation hinged door
- Single vanity with sink and faucet
- GFCI protected outlet
- Toothbrush and towel holder
- Corian countertops
- Synthetic wear resistant flooring offering maintenance free natural wood look
- Full length mirror with upholstered frame

Utility Cabin and Storage

Laminate finished cabinetry with solid wood capping throughout with accented wall and ceiling coverings

Private access door to cabin for privacy

A/C vents in utility cabin

Hull side window with blinds

Overhead LED ceiling lights

Large Corian cover

Storage cabinets under countertop

Hanging cabinet for storage

Navigation Area

Upholstered navigation work surface for charts and books with locker

C-Zone 7" digital switching control screen with transfer switches for all electrical systems

Dedicated service panel for optional generator, water maker, and aircon display/control panels

Multi zone entertainment system master unit offering 4 zone control Light switch panel controlling all salon, galley, and aft cockpit lighting

Remote battery switch controls for all onboard batteries

Water and Bilge System

Fresh water pressure pump with accumulator tank offering equal water pressure throughout

Two (2) 80L/21 gal each water heaters

Two (2) 400 L/ 106 US gal connected water tanks

Transom pull out shower mixer (hot/cold)

Water tank levels visible through C-Zone system

Four (4) automatic bilge pumps

Waste System

Grey water from showers and sinks collected in sealed sump boxes with auto discharge overboard

Two (2) 80 L/ 21 US gal black water tanks with sea discharge pumps and dockside pump out

Black water tank levels visible through C-Zone system

Electrical

C-Zone DC digital switching system

Main house battery charger/inverter: MasterVolt Mass Combi Pro 24/3500-100

Main engine battery chargers: MasterVolt EasyCharge 6A (2)

Master control panel for 24v and shore power service

Remoter battery master switches at panel

Shore side electrical system

AC power supplied by two (2) 50 Amp 125/250v shore power cables

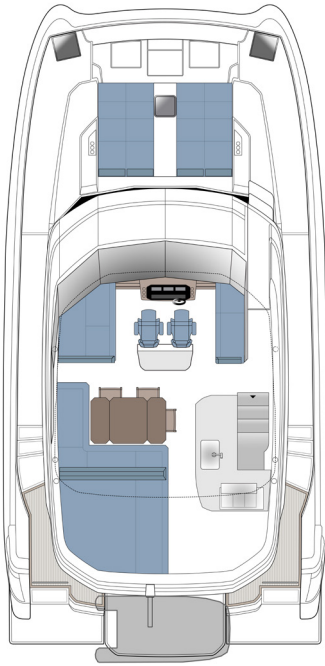
Galvanic isolator protector system

Shore power overcurrent protection breakers

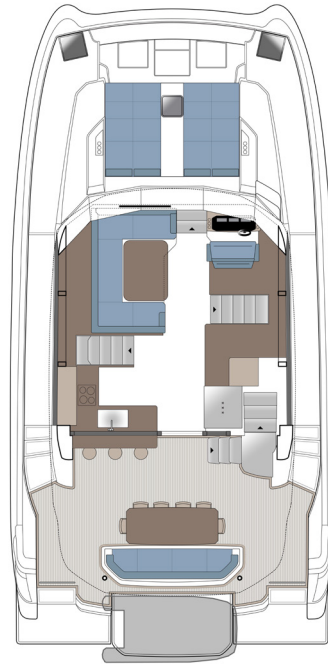
House batteries = four (4) 200 A/h AGM

Engine start batteries = two (2) 180 A/h AGM

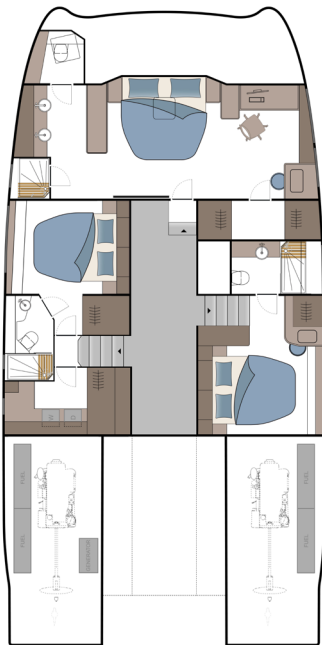
OPTIONAL LAYOUTS



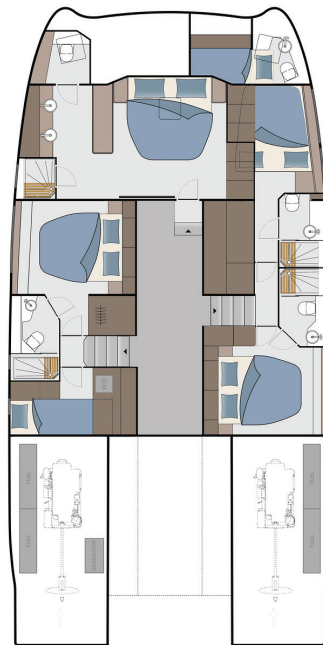
**FLYBRIDGE WITH
OPTIONAL CAPTAINS CHAIRS**



**MAIN DECK WITH
OPTIONAL INTERIOR HELM**



**3-CABIN WITH OPTIONAL
OWNERS SUITE DESK**



4-CABIN

- 3-CABIN AND 4-CABIN FLOOR PLANS INCLUDE OPTIONAL:**
- FOREPEAK SKIPPER CABIN (FORWARD STARBOARD HULL)
 - OVER/UNDER BUNK BEDS IN LIEU OF LAUNDRY ROOM